

The PotomacWest Collection Closet System

A high quality closet system

Standard Features:

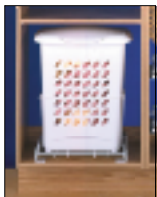
Built Like Fine Cabinets!

- Materials are 3/4" Thick
- Each unit/section has its own cabinet side wall
- 4" Recess Toe Kick Bases w/Levelers
- 120 Degree Opening Doors
- Heavy Duty Closet Rods
- Standard White Thermoplastic Finish
- Flat Door and/or Drawer Style
- All Units are 16" Deep x 90" High when stacked
- Adjustable Shelves
- Chrome Knobs
- Open Back (with wide securing to wall cleat)

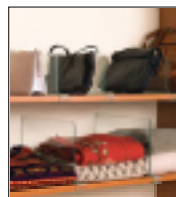
Optional Hardware:



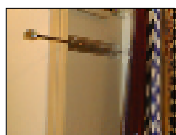
Tie / Belt
Full Extension
Pull Out Rack



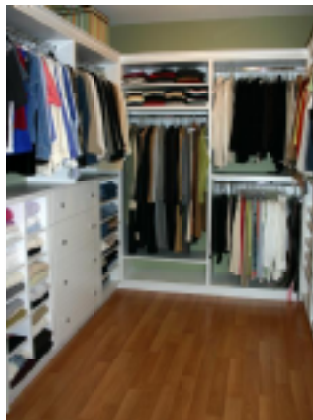
Pull Out
Full Extension
Hamper Basket



Shelf Divider
Clear, Sliding
(effective alternative to
confining "cubby" spaces)



Heavy Duty
Garment / Valet Rod



Optional Door Styles:



Shaker Raised Panel

Select in our showroom
10 Door Styles

Options:

Finish Colors & Doors:

We offer a multitude selection of finishes and door styles as well as contemporary and traditional decor. Visit our showroom for the latest selection.

Crown Molding

Finished Backs

Custom Sizes

Enclose All Sections w/ Doors

Dressing Island Unit

Single Bench Seat

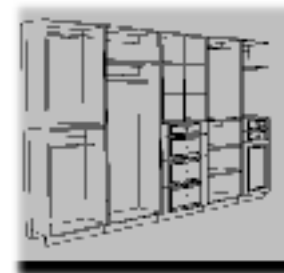
Double Bench Seat

Robe Hooks

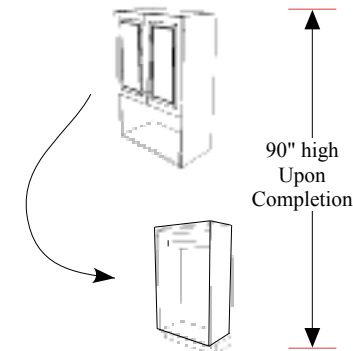
and more ...

How Does It Work?

Mix & Match Base Cabinets & Upper Cabinets To Create Your Own Custom Configuration. We stretch units in width to fit your available space.



Place an upper cabinet on a base cabinet to create a section.



Organization Has Never Been So Simple!